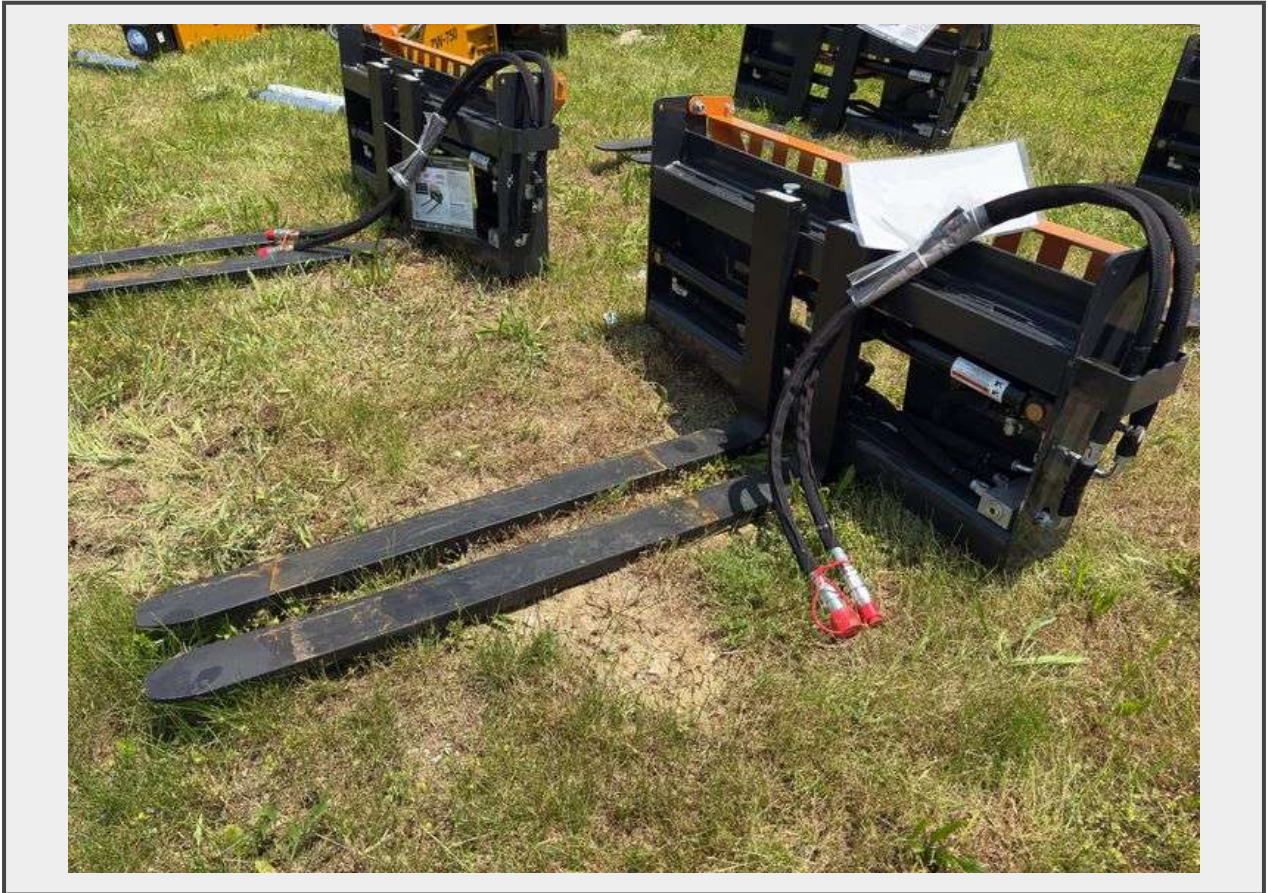


Sale Name: Equipment Auction Catalog - [CLICK HERE](#)

LOT 21 - 2025 Wolverine Skid Steer Pallet Fork - Hydraulic Adjustable - Model PFA-11-3300G - SN ZW01782



Description

Unused 2025 Skid Steer Sickle Bar Mower

Cutting Capacity: 2" Material

Cutter Length: 72"

Weight: 286 lbs.

Number of Teeth: 25

Flow Range: 16-20 GPM

Drive System: Gerotor Motor w/Pitman drive

Tooth Style: Top Serrated 2" Segment

Aquatic Approved: Yes

Max Pressure: 3500 PSI

Quantity: 1



<https://bids.hbarrysmith.com/>