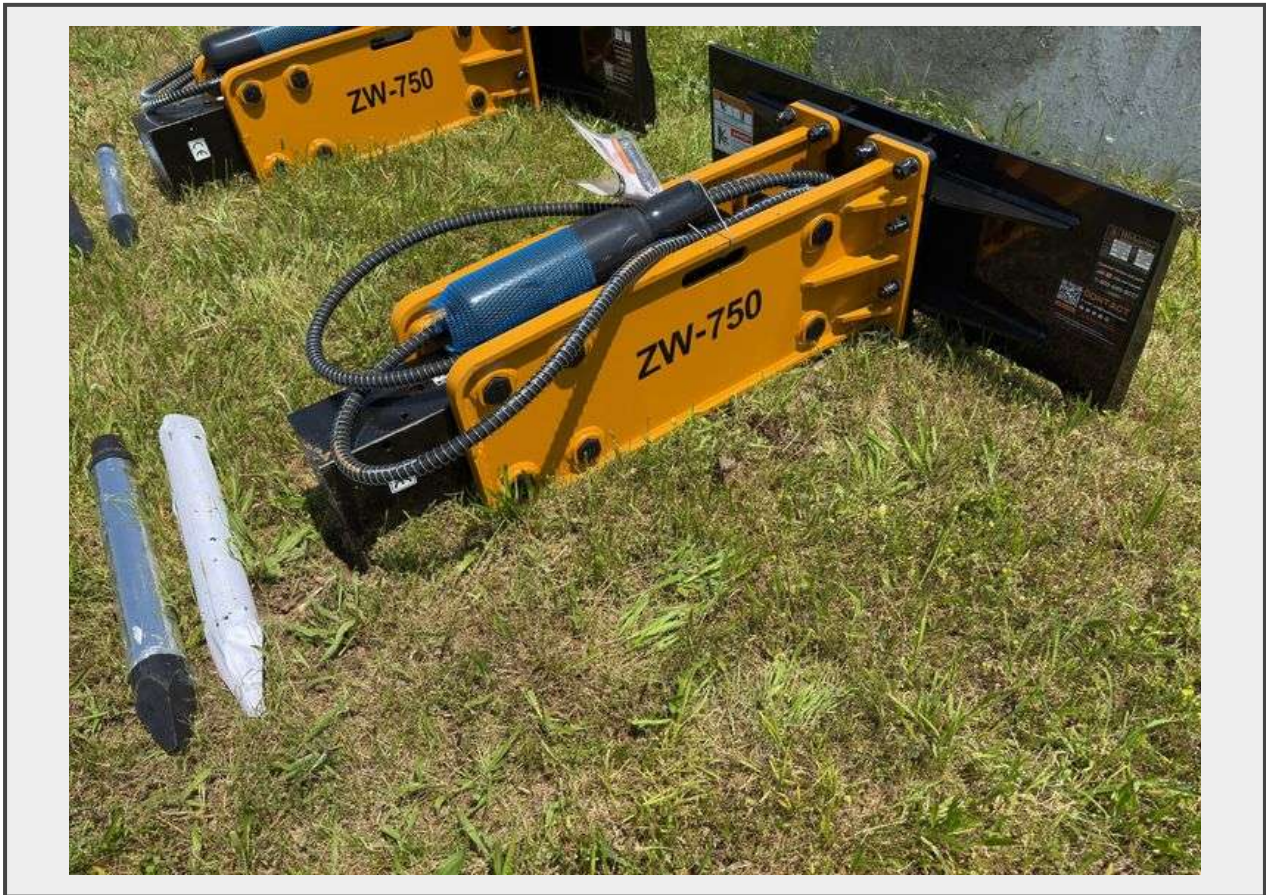


**Sale Name:** Equipment Auction Catalog - [CLICK HERE](#)

**LOT 17 - 2025 Wolverine Concrete Breaker - Model CB-11-750F - SN ZW 00441**



### Description

Unused 2025 Skid Steer Concrete Breaker Attachment

Impact Energy Class:750 ft lb

Operating Weight: 1230 lbs

Length With Tool:69 in

Overall Width :51 in

Working Steel Diameter:2.67 in

Blows Per Minute (variable):620 - 1150

Oil Flow Range:11.9 - 21.9 gpm

Operating Pressure Range:1,566 - 3000 psi

Relief Pressure:2,310 - 2,610 psi

**Quantity: 1**



<https://bids.hbarrysmith.com/>